



# **Langtved Data Ltd**

## **Newsletter**

Issue nr. 1



## Welcome to Langtved Data's newsletter

Approximately four times a year, we will inform our customers as well as others with connection to us, on the development and new actions taken by Langtved Data Ltd.

We hope that this newsletter can be helpful for you in getting more out of your IT systems. We would like to contribute to the exchange of ideas and experiences.

Tor Foss Mortensen, Langtved Data

### **In this very first newsletter you can read about the following:**

1. New contract: Aarhus University Hospital
2. Langtved Data's website, new design
3. We introduce "Remote Support"
4. Help function - manuals in the LDB Desktop
5. Message system



## NEW CONTRACT:

### Langtved Data Ltd. signs contract with the Aarhus University Hospital

We are proud to announce that yet another department at Aarhus University Hospital has chosen a quality IT solution from Langtved Data A / S. This time it is the Clinical Genetic Department at Aarhus University Hospital. The department will use the system to support tasks such as:

- Genetic counselling: for families and patients with genetic diseases
- genetic diagnosis: examinations for genetically conditioned diseases
- prenatal diagnosis: examinations connected to pregnancy

The system is based on our standard genetics system. A number of facilities are added. A few are mentioned here:

Automatic deployment of personal data from the CPR Register (register of civil registration numbers)

Message system – find more information further in the newsletter  
Import from MetaSystems

It is expected that the system will be fully implemented by the end of summer.

We are looking forward the cooperation. We are pleased and proud that our company was chosen to supply the IT system. We will do our best to provide and service the solution in the best possible way.

We thank the Clinical Genetic Department at Aarhus University Hospital for the trust they have shown and look forward to the cooperation which will benefit both parties.

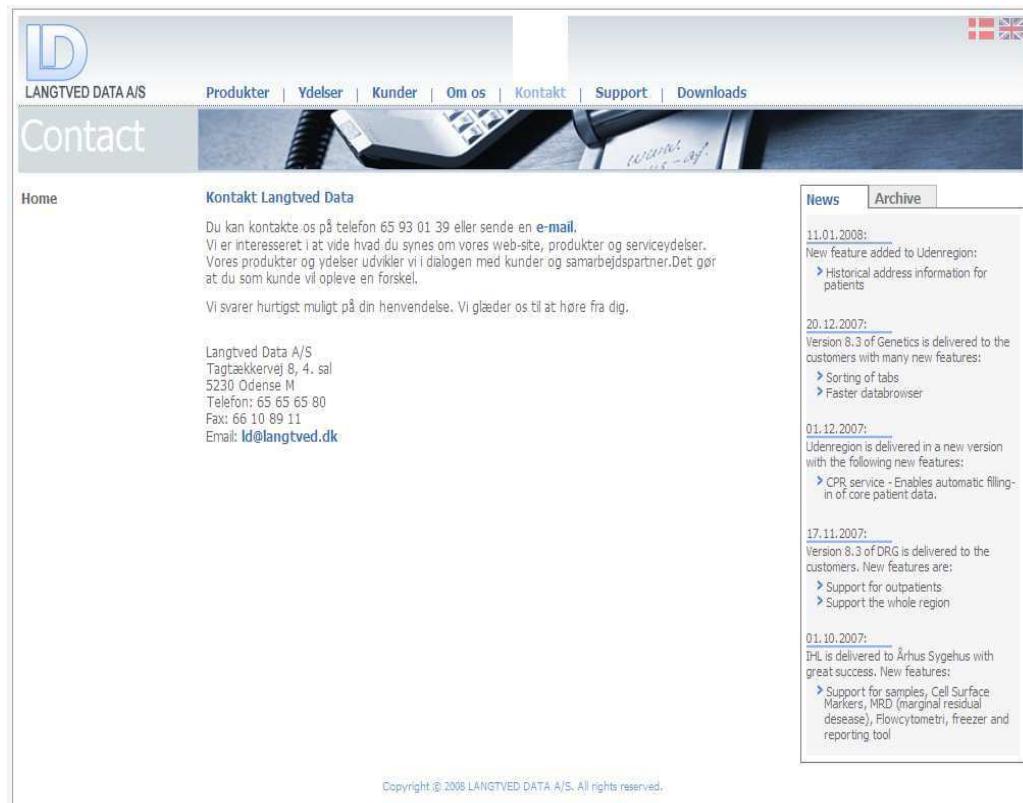


## New website

Recently Langtved Data Ltd. got a new layout on the website. The site has also been updated with some new information. For example, information on our products has been updated.

In addition, we will also bring news on the site, so our customers and business partners have the opportunity to follow in our development and our new initiatives, both related to our products and our markets. The new website has to be seen! Find out more: [www.langtved.dk](http://www.langtved.dk)

An example of the new layout:



The screenshot displays the website's layout for the 'Contact' page. At the top, there is a header with the 'LD' logo and the text 'LANGTVED DATA A/S'. A navigation menu includes links for 'Produkter', 'Ydelse', 'Kunder', 'Om os', 'Kontakt', 'Support', and 'Downloads'. A small Danish flag is visible in the top right corner. Below the header, the page title 'Contact' is shown above a background image of a telephone. The main content area is divided into three columns. The left column contains a 'Home' link. The middle column, titled 'Kontakt Langtved Data', provides contact details and a message: 'Du kan kontakte os på telefon 65 93 01 39 eller sende en e-mail. Vi er interesseret i at vide hvad du synes om vores web-site, produkter og serviceydelser. Vores produkter og ydelse udvikler vi i dialogen med kunder og samarbejdspartner. Det gør at du som kunde vil opleve en forskel. Vi svarer hurtigst muligt på din henvendelse. Vi glæder os til at høre fra dig.' Below this, the company's address and contact information are listed: 'Langtved Data A/S, Tagtækkervej 8, 4. sal, 5230 Odense M, Telefon: 65 65 65 80, Fax: 66 10 89 11, Email: [ld@langtved.dk](mailto:ld@langtved.dk)'. The right column features a 'News' section with an 'Archive' link. It lists several news items with dates and brief descriptions of new features or updates, such as 'New feature added to Udenregion: Historical address information for patients' (11.01.2008), 'Version 8.3 of Genetics is delivered to the customers with many new features: Sorting of tabs, Faster databrowser' (20.12.2007), 'Udenregion is delivered in a new version with the following new features: CPR service - Enables automatic filling-in of core patient data.' (01.12.2007), 'Version 8.3 of DRG is delivered to the customers. New features are: Support for outpatients, Support the whole region' (17.11.2007), and 'IHL is delivered to Århus Sygehus with great success. New features: Support for samples, Cell Surface Markers, MRD (marginal residual disease), Flowcytometri, freezer and reporting tool' (01.10.2007). At the bottom of the page, a copyright notice reads: 'Copyright © 2008 LANGTVED DATA A/S. All rights reserved.'



LANGTVED DATA A/S

## Remote support via the website

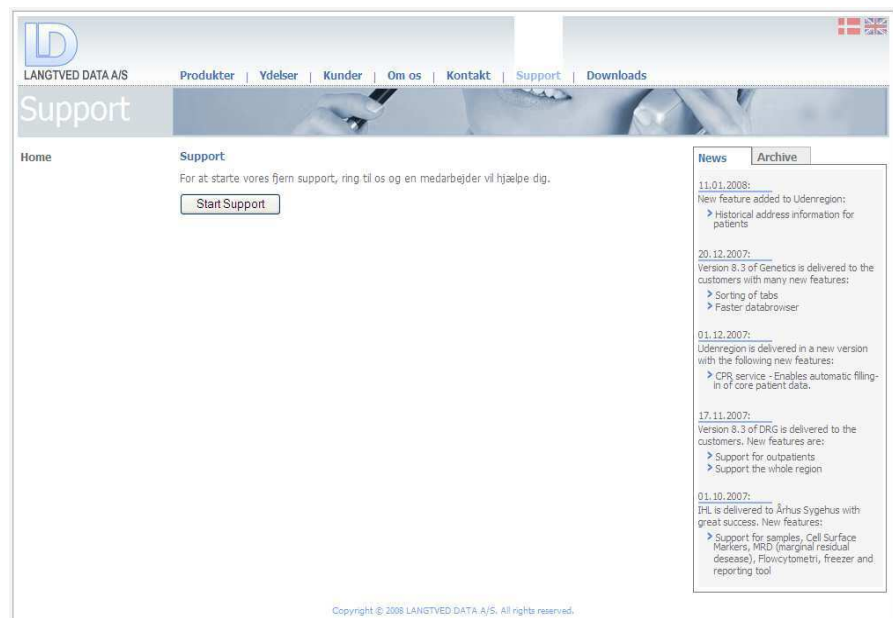
### Did you try to print a report, but could not - or to create a new test or field in the table without any luck?

Frustrations are many when you can not make the system work as it should. Typically it is a very small detail that has been skipped in the process which results that you, for example, can not print a report.

The solution to these problems is our new Remote support over web site. While we provide support, we overtake or look at your screen and correct the error while you see what our technician does. The technician will tell over the phone, what exactly is happening while the user follows it all on his/her screen. In this way you will even be able to see what you for instance have done wrong or forgot to do when the report did not work.

If you need support, you must always call us first. If the technician determines that it is easier to explain what to do, by taking over the customer's screen, the Remote support is started via website: [www.langtved.dk](http://www.langtved.dk).

You just click on the button "Start support":



The screenshot shows the 'Support' page of the Langtved Data A/S website. The page features a navigation menu with links for 'Produkter', 'Ydelse', 'Kunder', 'Om os', 'Kontakt', 'Support', and 'Downloads'. The main content area includes a 'Support' section with a 'Start Support' button and a 'News' section with a list of recent updates. The footer contains the copyright notice: 'Copyright © 2008 LANGTVED DATA A/S. All rights reserved.'

LANGTVED DATA A/S

Produkter | Ydelse | Kunder | Om os | Kontakt | Support | Downloads

## Support

Home

Support

For at starte vores fjern support, ring til os og en medarbejder vil hjælpe dig.

[Start Support](#)

News | Archive

11.01.2008:  
New feature added to Udenregion:  
➤ Historical address information for patients

20.12.2007:  
Version 9.3 of Genetics is delivered to the customers with many new features:  
➤ Sorting of tabs  
➤ Faster databrowser

01.12.2007:  
Udenregion is delivered in a new version with the following new features:  
➤ CPR service - Enables automatic filling-in of core patient data.

17.11.2007:  
Version 9.3 of DRG is delivered to the customers. New features are:  
➤ Support for outpatients  
➤ Support the whole region

01.10.2007:  
IHL is delivered to Århus Sygehus with great success. New features:  
➤ Support for samples, Cell Surface Markers, MRD (marginal residual disease), Flowcytometri, freezer and reporting tool

Copyright © 2008 LANGTVED DATA A/S. All rights reserved.

## New Help function

**(available with version 8.5 of LDB Desktop which will be launched during the summer of 2008)**

New versions of our base system, LDB desktop, which all of our applications are based on, will include a help function.

This feature is designed to guide the user through some procedures which are expected to be valuable for the user. A great deal of information is to be found in the help function.

Information on the following issues can be highlighted:

- data browser
- searches
- reports
- text imports
- user administration

It is our hope that help will make it even easier to use Langtved Data's solutions.



## Message system

(available with version 8.5 of LDB Desktop which will be launched during summer 2008)

Have you ever thought that it would be nice to quickly come in contact with other users of the same database? Or have you thought that it would be nice if you could make on-line notes, which will never disappear, and where you could write your "to-do lists," or leave a message to your colleague? If so, you'll love our new message system.

Message system is activated automatically when you log on to the latest versions of Langtved Data's databases. In other words, as soon as you are logged on one of our databases, you have the ability to communicate with other users of the database. It can be either in the form of an online communication (as in chat programs) or a so-called sticker message (online slip, similar to the well known yellow notes).

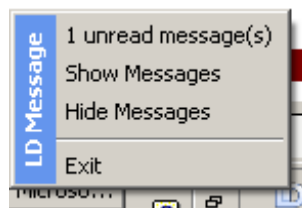
Message system makes it significantly easier to communicate and exchange information for users of Langtved Data's solutions.

### How does the system work?

The system is started by a double click on the LD icon in the lower higher corner of the PC's desktop or by right-click on the same:



If you right-click, 4 options to choose from appear:



You choose the desired option and you are already well on the way to use the message system.

Message system is very straightforward and easy to use. We hope that our users will welcome this type of communication tool.



## Write to us

We welcome suggestions, options and comments regarding our newsletter. Please write to the following e-mail address.

[ST@Langtved.dk](mailto:ST@Langtved.dk)

Finally, have a nice summer!



LANGTVED DATA A/S

**Langtved Data A/S** provides the health sector with IT-solutions adapted to the individual hospitals. Our specific systems are fully Board of Health compliant and tailored to meet local needs. Customer satisfaction is central to our business, and we achieve this by being highly receptive to customer requirements and feedback.

We have implemented a large number of clinical databases. These databases cover a wide variety of information such as:

- \* Genetic Counselling
- \* Hip surgery and rehabilitation therapy
- \* Life quality research in relation to treatment
- \* Lung Cancer Treatment
- \* Mammography Screening
- \* Medication of Chronic Illness sufferers
- \* Molecular Laboratory Information Management
- \* Out of County Patient Placements

Address: Langtved Data A/S  
Tagtækkervej 8, 4<sup>th</sup> floor  
DK-5230 Odense M

Phone: +45 65 65 65 80

www: [www.Langtved.dk](http://www.Langtved.dk)

e-mail: [LD@Langtved.dk](mailto:LD@Langtved.dk)

